

Stay one step ahead of your plant's nitrogen needs with Envita

Envita® is a leading nitrogen-fixing biological featuring the bacteria *Gluconacetobacter diazotrophicus* (Gd) – a naturally occurring food-grade bacteria that enables a unique mode of nitrogen fixation in a wide variety of crops.

Product benefits:

- When applied as a foliar treatment Envita is systemic, ensuring plants have a consistent nitrogen supply and can make more efficient use of available nitrogen
- Enabling the entire plant – including leaves and roots – to fix nitrogen all season long

For use on:¹

- Canola
- Cereals
- Corn
- Potatoes
- Dry edible beans
- Soybeans
- Assorted fruits and vegetables

Active ingredient:

- *Gluconacetobacter diazotrophicus*

For management of:

- Nitrogen use efficiency – ensuring this essential nutrient is available in the right place at the right time – all season long
- An additional source of nitrogen, supplementing the supply of nitrogen available from applied fertilizers

Application rate:¹

Foliar application:

- 95 mL/ac

Packaging:

- 4 x 3.78 L bags (treats 160 acres)



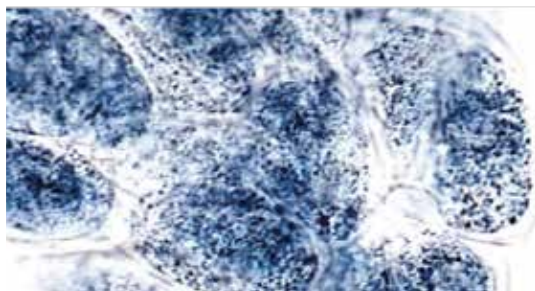
syngenta®

For more information about Envita or the rest of the Syngenta Biologicals portfolio, visit Syngenta.ca/biologicals or contact our Customer Interaction Centre at 1-87-SYNGENTA (1-877-964-3682).

How it works

After an Envita application, the bacteria form a symbiotic relationship with the host plant, ultimately replicating and spreading through plant cells. The bacteria begin fixing nitrogen from the air soon after application and continue to do so throughout the season, offering the host plant an alternate source of nitrogen from application through harvest.

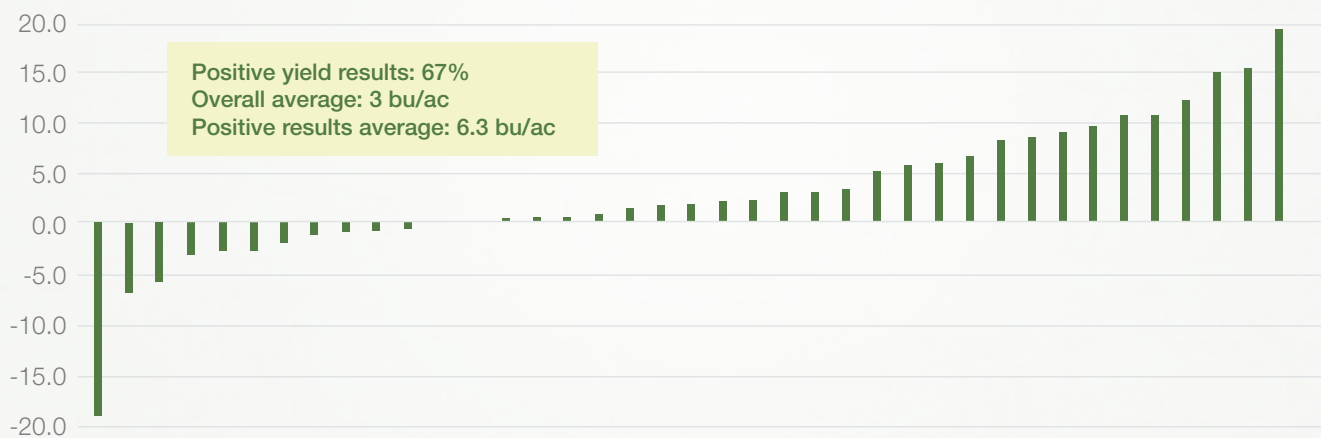
This provides plants with an additional source of nitrogen where and when it's needed, supplementing the supply of nitrogen available from fertilizer treatments.



This microscopic image shows *Gluconacetobacter diazotrophicus* (in blue) inside corn plant cells. The bacteria replicates and spreads through plant cells, and begins fixing nitrogen from the air soon after application, offering an alternative source of nitrogen throughout the season.



Envita vs. untreated checks in grain corn 2021-23



Source: Grower applied trials conducted in Ontario 2021-2023. n = 39

Field experiences

In grower trials, plants treated with Envita consistently displayed more developed root structures, more vegetation and more yield than untreated checks.



2024 Performance Guarantee

Easy, risk-free way to try Envita*

If the Envita application does not produce the minimum yield increase specified by the manufacturer on approved crops for any given field, Azotic Technologies Limited. will replace the product up to the quantity used on that field.*

*Conditions apply - subject to program terms and conditions. See program terms and conditions at <https://azotic-na.com/performance-guarantee-canada>

**Subject to change

Approved crops	Yield increase**
Corn	2.5 bu/ac
Soybeans	1.5 bu/ac
Wheat (including durum)	2.0 bu/ac
Canola	1 bu/ac

Envita vs. untreated checks

Soybean 2022-23

1.6
bu/ac
Overall average



76%
Positive yield results
2.3 bu/ac
Positive results average

Source: Grower trials conducted in ON in 2022 and 2023. n = 21

Potato 2022-23

36
cwt/ac
Overall average



91%
Positive yield results
43 cwt/ac
Irrigated average

Source: Grower trials conducted in AB, MB, ON and PE in 2022 and in AB, SK, MB and PE in 2023. n = 43. Envita applied at 95 mL/ac. AB & PE yield determined by 3 x 10' digs in each of the Envita and untreated area. ON yield determined by distance to fill a truck at harvest. QC yield estimate with one x 10' dig. MB yield from a small plot replicated plot (4 reps, 10m long plots).

Winter wheat and durum 2022-23

1.1
bu/ac
Overall average



67%
Positive yield results
2.3 bu/ac
Positive results average

Source: Grower trials conducted in ON in 2022 and 2023. n = 27

Spring wheat and durum 2022-23

2.2
bu/ac
Overall average



72%
Positive yield results
3.1 bu/ac
Positive results average

Source: Grower field scale trials conducted in AB, SK, MB and QC in 2022 and 2023. n = 32. Yield results are from yield monitors or weigh wagons.

Canola 2022-23

1.7
bu/ac
Overall average



73%
Positive yield results
2.7 bu/ac
Positive results average

Source: Syngenta field scale trials conducted in AB and SK in 2022 and in AB, SK and MB in 2023. n = 26



Application type	Crop	Crop stage	Tank-mix partners	Rate ¹	Water volume
Foliar	Corn Soybeans	V2 – V6 (2 leaf – 6 leaf)	<ul style="list-style-type: none"> Fertilizer² Registered foliar pesticides^{3, 4} 	95 mL/ac (40 ac/bag)	10 gal/ac water minimum (38 L/ac water)
	Canola	3 leaf to bolting			
	Wheat	BBCH 20 – 39 (3 leaf – flag leaf)			
	Other crops	Herbicide timing ¹			
	Potatoes	Fungicide timing ¹			

Application best practices:

- Envita is compatible with most leading pesticides when best management practices are followed.
- When applying Envita on its own as a foliar application, use a non-ionic surfactant at 0.1% v/v.

Foliar application guidelines:

- Apply either first thing in the morning when stomata are open but before drying time is accelerated, or later in the afternoon after the heat of the day has passed.
- Avoid evening applications when the stomata are closed.
- Do not apply Envita if a rain event is likely within two hours of spraying.

Storage and handling:

- Envita contains live organisms that should be stored between 4°C and 8°C. Do not freeze.
- Keep out of direct sunlight.
- Shake each Envita bag thoroughly for 30 seconds before mixing.
- Do not open a bag of Envita before you intend to apply it. All product must be applied on the day the bag is opened.
- Product shelf-life is the current application season.

¹ Refer to label for a complete listing of crops, application rates, and application timing.

² Do not spray with straight 28-0-0 or any other undiluted fertilizer. Add water before adding Envita to the tank.

³ Avoid copper mixes.

⁴ Spray immediately when tank mixing Envita with phenoxy herbicides.

Performance evaluations are based on internal trials, field observations and/or public information. Data from multiple locations and years should be consulted whenever possible. Individual results may vary depending on local growing, soil, and weather conditions.

Always read and follow label directions. The Alliance Frame, the Purpose Icon and the Syngenta logo are trademarks of a Syngenta Group Company. Envita® is a trademark of Azotic Technologies Limited. Used under license. © 2024 Syngenta.